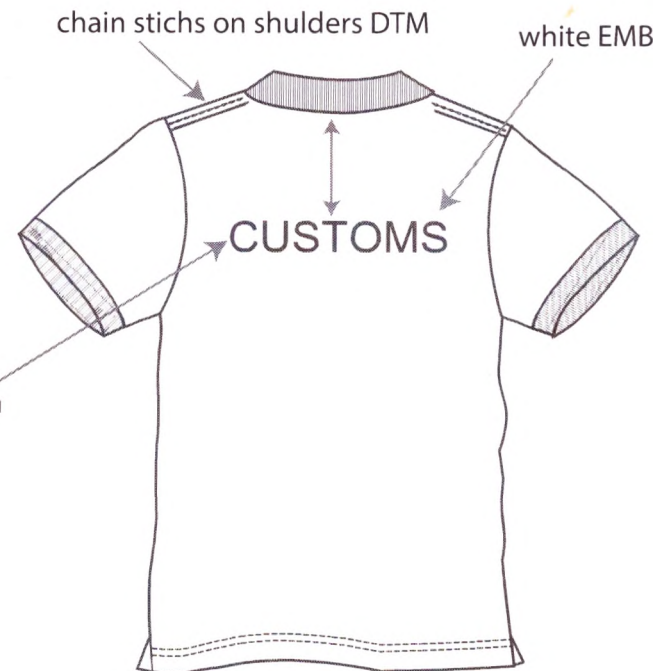
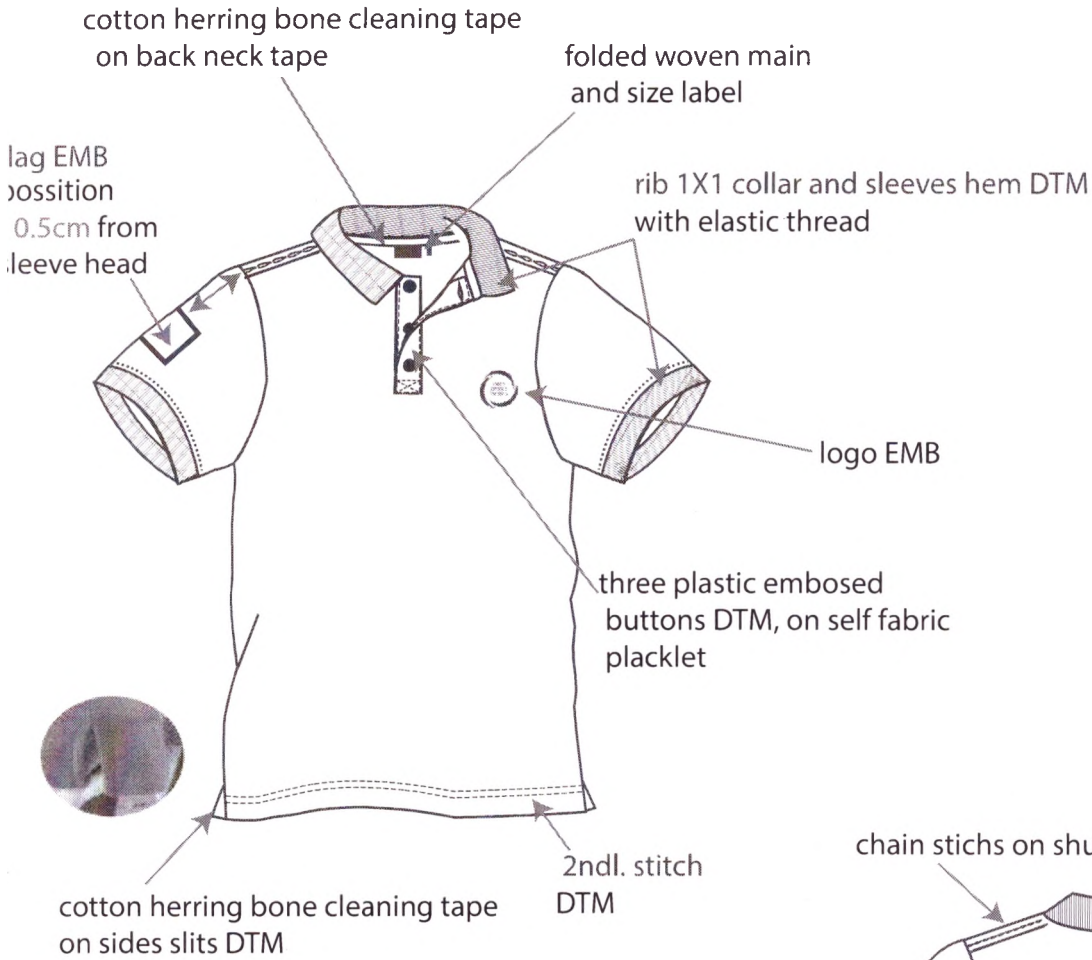


STYLE ref : #1		DATE: 14.9.17	
DEPARTMENT: MEN		DESIGNER:	
SEASON: SUMMER 2018		DESCRIPTION: S/S solid polo pique	
FABRIC COMPOSITION: pique CVC 60% cotton 40% poly + anti pilling tretment		FABRIC WEIGHT/ GG: 200gr	
COMBO'S QTY: 1			
FIRST SAMPLE SHOULD BE AS SIMILAR AS POSSIBLE TO ORIGINAL.			



COLOR COMBO
NAVY- follow swatch color

STYLE ref: #1

ACCESORIES AND TRIMS

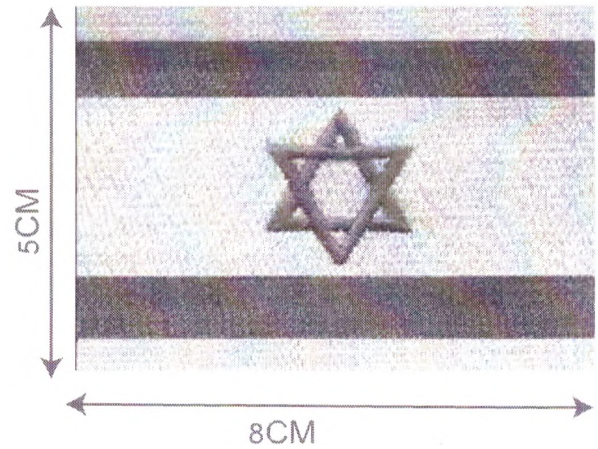
logo EMB

text should be optic white embroidery
frame should be blue 19-4049tpx
(same as flag EMB)



flag EMB

position 10.5cm from sleeve head
optic white EMB and blue 19-4049tpx

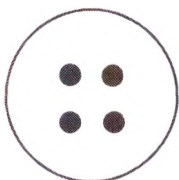


back EMB



text should be optic white embroidery

BUTTON : should be DTM
size- 11.2mm, plastic button- engrave



STYLE ref: #1

PACKING

please use the logo bag with the warning.
add silicon bag to avoid wetness



**WARNING - TO AVOID DANGER OF SUFFOCATION , KEEP AWAY FROM
BABIES AND CHILDREN . DO NOT USE IN CRIBS , BEDS , CARRIAGES OR PLAY PENS .**

THIS BAG IS NOT A TOY

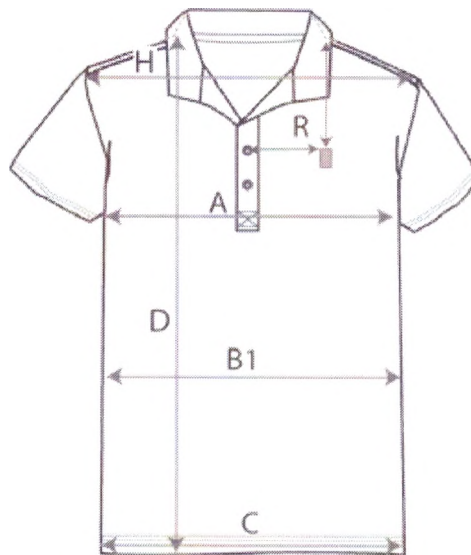
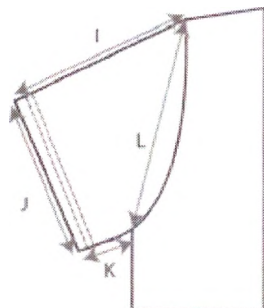
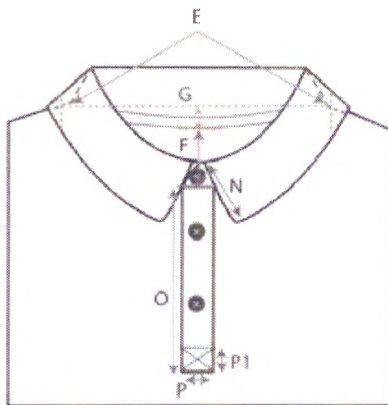
MADE IN CHINA

↑
to be update

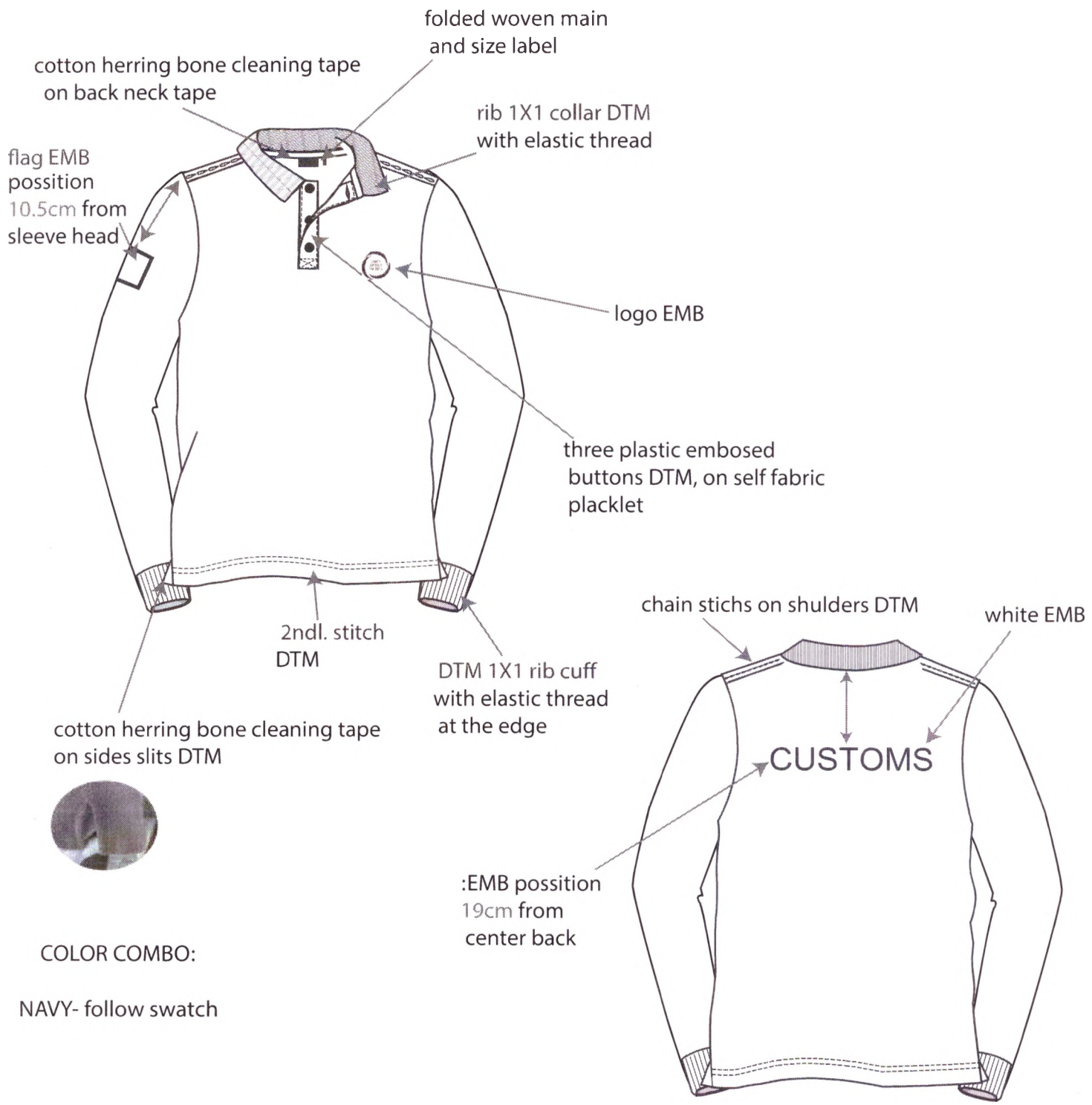
STYLE ref: #1

SIZE SPEC

		Style No #1 .	Supp. style #	Season						Page	
POLO CLASSIC s.s.		Supplier's Name	Fabric Comp.						Date		
SIZE CHART :				S	M	L	XL	XXL	3XL	Grading	tolerance
A	1/2 chest width 1 cm below armhole			51	54	57	60	63	66	3	1
B	waist position from HPS			47	48	49	50	51	52	0	0
B1	1/2 waist width			48.5	51.5	54.5	57.5	60.5	63.5	3	1
C	1/2 bottom width - above slits			49	52	55	58	61	64	3	1
D	total length from HPS			70	72	74	76	78	80	2	1
E	neck width(from seam to seam)			16	16.5	17	17.5	18	18.5	0.5	0.2
F	front neck drop from back neck drop			9	9.5	10	10.5	11	11.5	0.5	0.2
G	back neck drop			1	1	1	1	1	1	0	0
H	shoulder to shoulder			41	44	47	50	53	56	3	1
H1	shoulder drop from HPS				3						
I	short sleeve length			23	24	25	26	27	28	1	0.3
J	1/2 sleeve opening width with rib			15	15.5	16	16.5	17	17.5	0.5	0.2
K	sleeve inseam			8	8.5	9	9.5	10	10.5	0.5	0.2
K1	rib finish on sleeve			2.5	2.5	2.5	2.5	2.5	2.5	0	0
L	armhole straight			22	23	24	25	26	27	1	0.3
M	hem stitch			2	2	2	2	2	2	0	0
N	collar point			6	6	6	6	6	6	0	0
O	placket length			15	15	15	16	16	16	0/0/1	0
P	placket width			3.2	3.2	3.2	3.2	3.2	3.2	0	0
P1	placket bar tack			2	2	2	2	2	2	0	0
Q	slit - hight * width			4.5*0.8	4.5*0.8	4.5*0.8	4.5*0.8	4.5*0.8	4.5*0.8	0	0
R	embroidery position - hight from HPS* width from CF			18*6.5	18*6.5	18.5*7	18.5*7	19*7.5	19*7.5	0/0.5	0
R1	FLAG EMB from sleeve head			10.5	10.5	11	11	11.5	11.5	0/0.5	0
R	back EMB from c.b			19	19	19.5	19.5	20	20	0/0.5	0



STYLE ref : #2		DATE: 19.9.17	
DEPARTMENT: MEN		DESIGNER:	
SEASON: SUMMER 2018		DESCRIPTION: L/S solid polo pique	
FABRIC COMPOSITION: pique CVC 60% cotton 40% poly + anti pilling tretment		FABRIC WEIGHT/ GG: 200gr	
COMBO'S QTY: 1			
FIRST SAMPLE SHOULD BE AS SIMILAR AS POSSIBLE TO ORIGINAL.			



STYLE ref: #2

ACCESORIES AND TRIMS

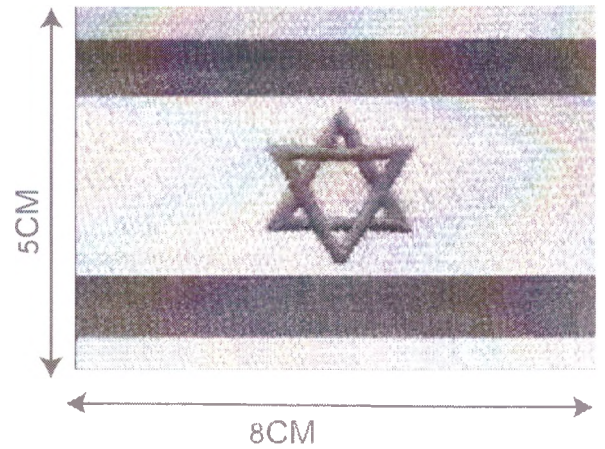
logo EMB

text should be optic white embroidery
frame should be blue 19-4049tpx
(same as flag EMB)



flag EMB

position 10.5cm from sleeve head
optic white EMB and blue 19-4049tpx



back EMB



text should be optic white embroidery
position: 19cm from center back

will send original samples to follow

BUTTON : should be DTM
size- 11.2mm, plastic button- engraved



STYLE ref: #2

PACKING

please use polybag with warning.
add silicon bag to avoid wetness



**WARNING - TO AVOID DANGER OF SUFFOCATION , KEEP AWAY FROM
BABIES AND CHILDREN . DO NOT USE IN CRIBS , BEDS , CARRIAGES OR PLAY PENS .**

THIS BAG IS NOT A TOY

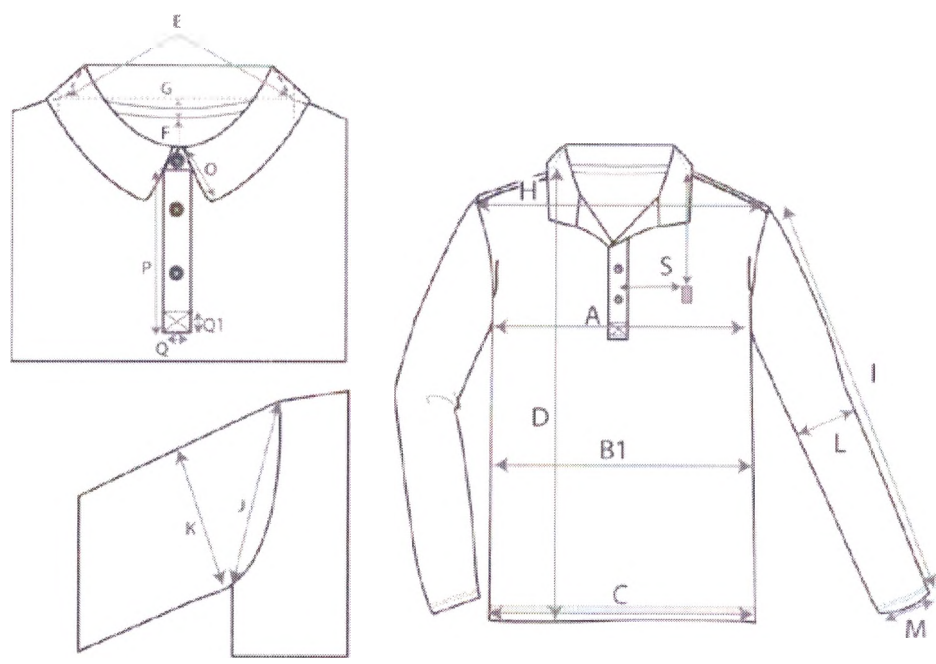
MADE IN CHINA

↑
to be update

STYLE ref: #2

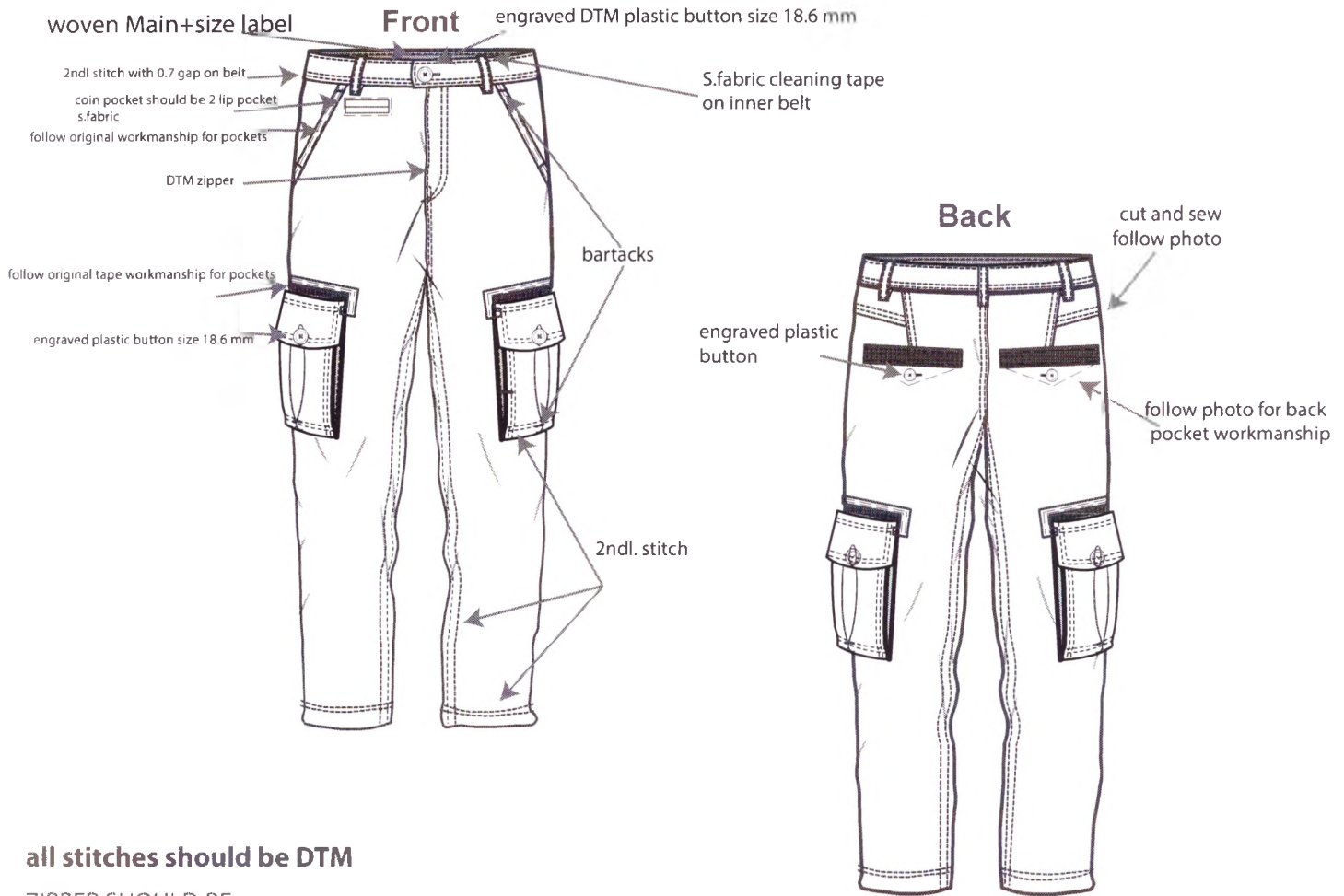
SIZE SPEC

		Style No.	Supp. style #	Season						Page	
				summer 18							
POLO CLASSIC I.s.		Supplier's Name	Fabric Comp.						Date		
SIZE CHART:											
				S	M	L	XL	XXL	3XL	Grading	tolerance
A	1/2 chest width 1 cm below armhole			51	54	57	60	63	66	3	1
B	waist position from HPS			47	48	49	50	51	52	0	0
B1	1/2 waist width			48.5	51.5	54.5	57.5	60.5	63.5	3	1
C	1/2 bottom width - above slits			49	52	55	58	61	64	3	1
D	total length from HPS			70	72	74	76	78	80	2	1
E	neck width(from seam to seam)			16	16.5	17	17.5	18	18.5	0.5	0.2
F	front neck drop from back neck drop			9	9.5	10	10.5	11	11.5	0.5	0.2
G	back neck drop			1	1	1	1	1	1	0	0
H	shoulder to shoulder			41	44	47	50	53	56	3	1
H1	shoulder drop from HPS				3						
I	sleeve length			66	67	68	69	70	71	1	0.3
J	armhole straight			22	23	24	25	26	27	1	0.3
K	1/2 bicep -1 cm under armhole			19.5	20	20.5	21	21.5	22	0.5	0.2
L	1/2 elbow width 33 cm from shoulder			16.5	17	17.5	18	18.5	19	0.5	0.2
M	1/2 sleeve opening width			9	9.5	10	10.5	11	11.5	0.5	0.2
M1	rib cuff hight			6	6	6	6	6	6	0	0
N	hem stitch			2	2	2	2	2	2	0	0
O	collar point			6	6	6	6	6	6	0	0
P	placket length			15	15	15	16	16	16	0/0/1	0
Q	placket width			3.5	3.5	3.5	3.5	3.5	3.5	0	0
Q1	placket bar tac			3	3	3	3	3	3	0	0
R	slit - hight * width			4.5*0.8	4.5*0.8	4.5*0.8	4.5*0.8	4.5*0.8	4.5*0.8	0	0
S	embroidery position - hight from HPS* width from CF			18.5*6.5	18.5*6.5	19*7	19*7	19.5*7.5	19.5*7.5	0/0.5	0
S1	FLAG EMB from sleeve head			10.5	10.5	11	11	11.5	11.5	0/0.5	0
S2	back EMB from c.b			19	19	19.5	19.5	20	20	0/0.5	0



DATE: 14/09/17

DEPARTMENT: MEN		
STYLE ref : #7	SEASON: summer 2018	DESCRIPTION: multi pocket cargo pants
FABRIC COMPOSITION: 98% cotton , 2% spandex-garment dye with peaching finishing process		FABRIC WHEIGHT/ GG: 235g
PLEASE DEVELOP FIRST SAMPLE ONLY AFTER RECEIVING CONFIRMATION.		
FIRST SAMPLE SHOULD BE AS SIMILAR AS POSSIBLE TO ORIGINAL.		



all stitches should be DTM

ZIPPER SHOULD BE:

YKK, YKK Vislon, YKK Zaglan, Opti, Prym or Albert Zips

color combo: navy

STYLE NO.-ref #7

details and workmanship

PLEASE FOLLOW ALL INNER WORKMANSHIP



inner waist belt - pls make from self fabric and with piping same tape as on back pockets.

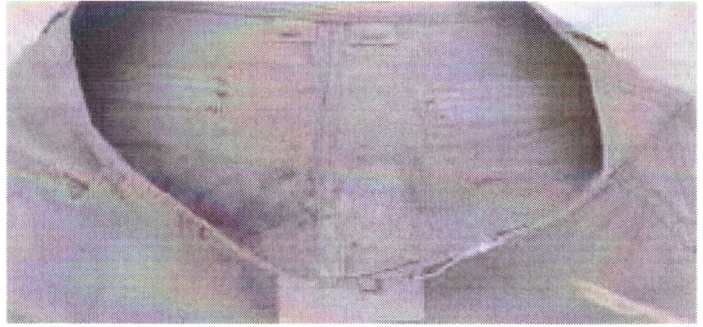
please note all inner workmanship should be clean

inner extra buttons same as main button should be on side inner blank label.



FRONT POCKET WORKMANSHIP

please make double lyer fabric for loops PLS add self fabric squares under inner pocket plackets corners to avoid fabric breaking as well as on belt loops to add strength to bartach



STYLE NO.-ref #7

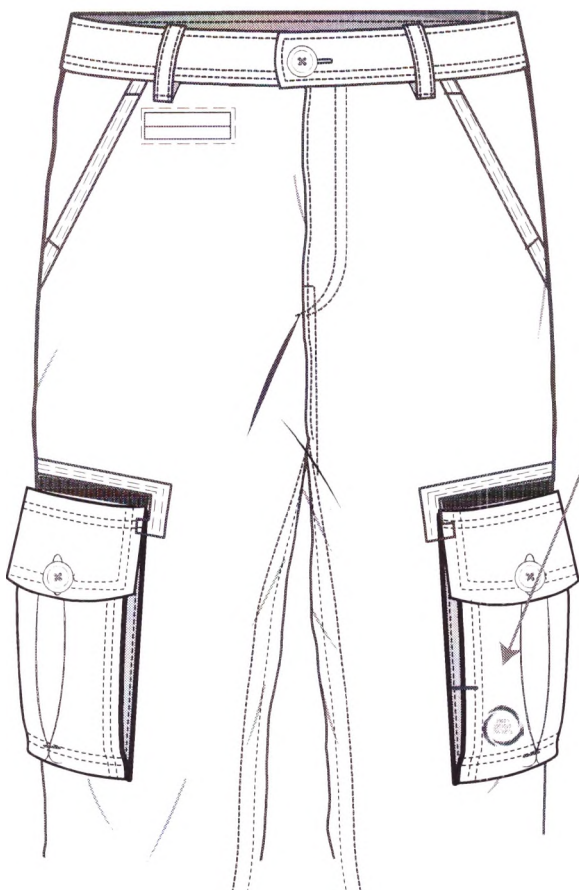
details and workmanship

SIDE AND BACK POCKETS PHOTOS FOR DETAIL REFERENCE AND WORKMANSHIP REFERENCE



logo EMB

text should be optic white embroidery
frame should be pantone 19-4049 tpx
should be in bottom part of pocket
same as photo



STYLE NO.-ref #7

packing

please use the logo bag with the warning.
add silicon bag to avoid wetness
please pfold and pack only after the garment is dry!

1.fold back to back

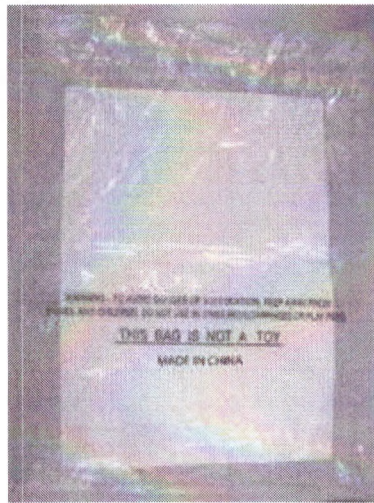


2.fold hem to band at back



28cm

37cm



polybag warning

WARNING - TO AVOID DANGER OF SUFFOCATION , KEEP AWAY FROM
BABIES AND CHILDREN . DO NOT USE IN CRIBS , BEDS , CARRIAGES OR PLAY PENS .

THIS BAG IS NOT A TOY

MADE IN CHINA

↑
to be update

STYLE NO. ref #7

SIZE SPEC

CARGO LONG PANTS		Fabric Comp.										
		98% cotton & 2% spandex										
SIZE CHART:		38	40	42	44	46	48	50	52	Grading	tolerance	
A	1/2 waist width - when front waist in on back waist	39	41	43	45	47	49	51	53	2	0.7	
B	1/2 hips, 20cm inc w.b- V measurement	49.5	51.5	53.5	55.5	57.5	59.5	61.5	63.5	2	0.7	
C	1/2 up-leg width	29.4	30.6	31.8	33	34.2	35.4	36.6	37.8	1.2	1	
D	1/2 knee width 35 from croch	19	19.5	20	20.5	21	21.5	22	22.5	0.5	0.2	
E	1/2 leg hem	18	18.5	19	19.5	20	20.5	21	21.5	0.5	1	
F	w b height	4	4	4	4	4	4	4	4	0	0	
G	inseam	84	84	84	84	84	84	84	84	0/1	0.5	
H	fly length - till bar tack	11.5	12.5	12.5	13.5	13.5	14.5	14.5	15.5	0/1	0.5	
I	fly width	3.5	3.5	3.5	3.5	3.5	3.5	3.5	3.5	0	0	
J	front rise inc. w.b	25.5	26	26.5	27	27.5	28	28.5	29	0.5	0.2	
K	back rise inc. w.b	39.5	40	40.5	41	41.5	42	42.5	43	0.5	0.2	
L	back pocket opening length	13	13.5	13.5	14	14	14.5	14.5	15	0/0.5	0.2	
M	back pocket height	1.2	1.2	1.2	1.2	1.2	1.2	1.2	1.2	0	0	
O	back pocket position from belt - at CB side	5.5	6	6	6.5	6.5	7	7	7.5	0/0.5	0.2	
P	loop length	6	6	6	6	6	6	6	6	0	0	
Q	loop width	1.3	1.3	1.3	1.3	1.3	1.3	1.3	1.3	0	0	
R	side pocket flap height x width	6x15.5	6.5x16	6.5x16	7x16.5	7x16.5	7.5x17	7.5x17	8x17.5	0/0.5	0.2	
S	side pocket bag height (inc. flap) x width	19.5x15	20x15.5	20x15.5	20.5x16	20.5x16	21x16.5	21x16.5	21.5x17	0/0.5	0.2	
T	side pocket depth	2	2	2	2	2	2	2	2	0	0	
U	front pocket length opening along side seam	15	15.5	15.5	16	16	16.5	16.5	17	0/0.5	0.2	
V	front pocket opening width along w.b	4	4.5	4.5	5	5	5.5	5.5	6	0/0.5	0.2	
V1	coin pocket height X width	1.3x5.5	1.3x6	1.3x6	1.3x6.5	1.3x6.5	1.3x7	1.3x7	1.3x7.5	0/0.5	0.2	
W	Hem width	2	2	2	2	2	2	2	2	0	0	
X	front pocket bag length from waist band seam on GF side	26	26	26	27	27	27	28	28	0/0/1	0.5	